

# META:PHI Improves Care for Patients with Addictions

Mentoring, Education, and Clinical Tools for Addiction: Primary Care-Hospital Integration (META:PHI) is having real impact on the lives of people living with opioid and alcohol addiction.

## ONTARIO IS FACING A GROWING OPIOID CRISIS

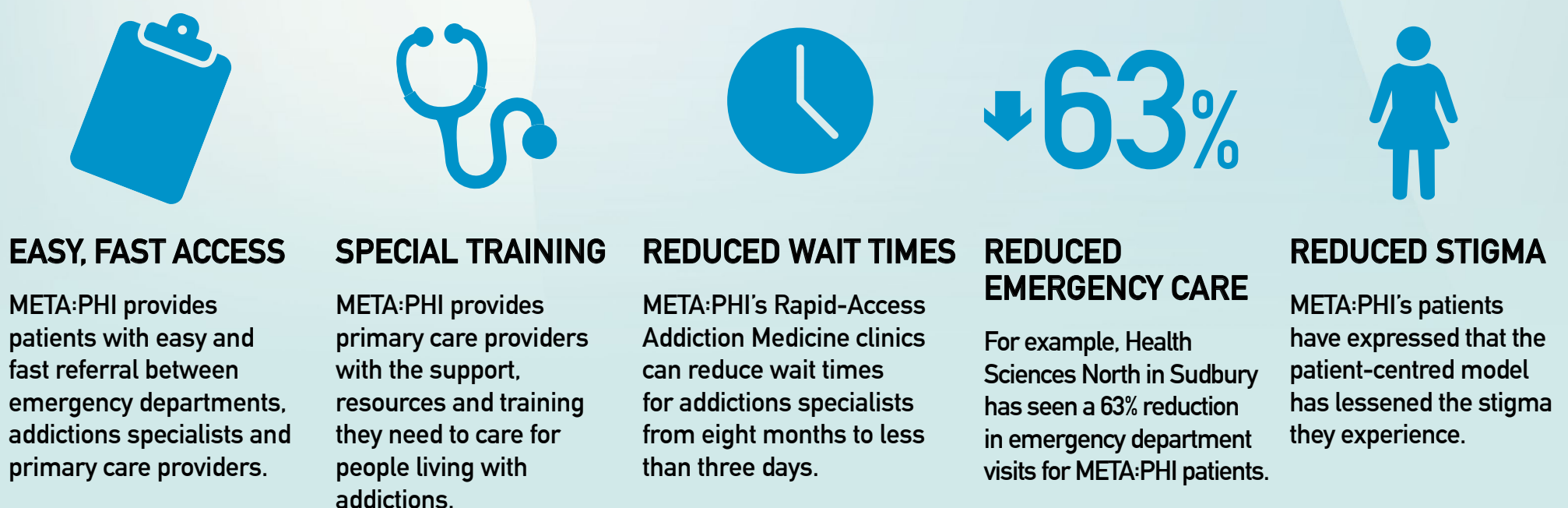
In 2015, approximately 2 people a day died of an opioid-related cause.



## META:PHI CLINICS ACROSS ONTARIO



## META:PHI IS CHANGING ADDICTIONS CARE FOR ONTARIANS



The spread of META:PHI to these 7 communities in Ontario was supported through ARTIC, a partnership of [Health Quality Ontario](#) and the [Council of Academic Hospitals of Ontario](#) that accelerates the spread of proven health care across Ontario.